

SUPRADO

A brand-new class of chemistry with a unique mode of action to fight against annual bluegrass weevils.



QUALI-PRO



quali-pro.com



@qualipro



@quali_pro

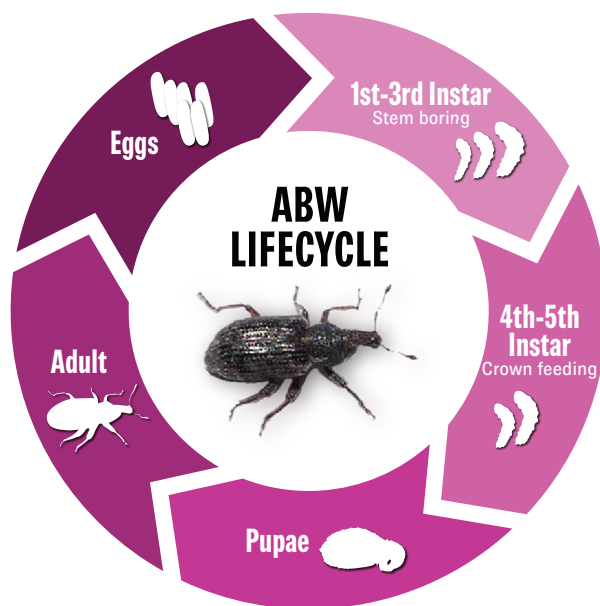
Suprado is a valuable tool in the fight against insecticide resistance in Annual Bluegrass Weevils.

Advantages of using Suprado

New Chemistry: Suprado's active ingredient, Novaluron, is available for use in the turf market for the first time. This introduces a new mode of action (IRAC Group 15) to the market as a valuable rotation option in the fight against insecticide resistance.

Application Flexibility: Suprado is effective across multiple stages in the ABW life cycle which provides timing flexibility to fit into your ABW program.

Unmatched Efficacy: Suprado provides superior control of damaging ABW, even on insecticide-resistant populations. No other solution offers this level of control.



How it Works

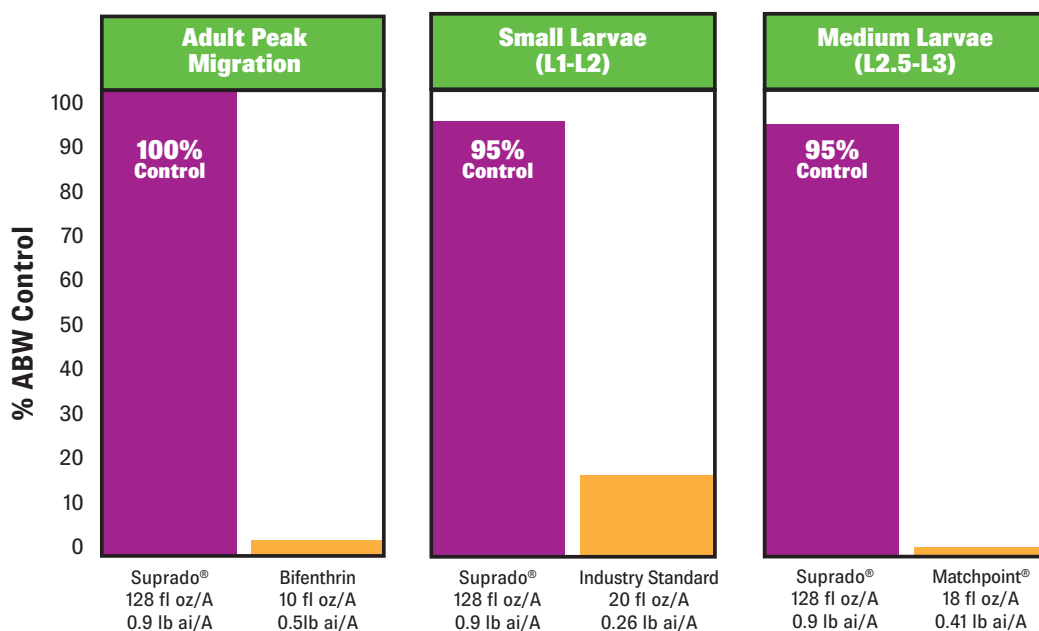
Novaluron is a chitin synthesis inhibitor (CSI). This active ingredient interferes with the ability of the insect to produce chitin, the primary component of insect exoskeletons, interrupting molting from one growth stage to another.

Field Study Results

Field tests conducted by Dr. Ben McGraw of Penn State University showed excellent control when applied to an ABW population with **moderate pyrethroid resistance** at typical application timings: adult peak migration, small larvae, and medium larvae stages.

2020 Annual Bluegrass Weevil Control Timing

Field tests by Dr. Ben McGraw of Penn State University





ABW Insecticide Resistance

Pyrethroid resistance in adult ABW was first reported in 2009 and has now been confirmed on many sites in NY, NJ, and PA. Pyrethroid-resistant populations have also been documented as having resistance to other chemical classes commonly used. This emphasizes the importance of including and rotating insecticides with different modes of action to prevent resistance from developing. The programs below outline two program options with optimal timing for enhanced efficacy and resistance management.

Choose Your Program

So where can Suprado fit into your program? Suprado's timing can be versatile but is most effective when timed during adult peak migration, typically 120-170 GDD (base 50°F, beginning March 1). Program A is the recommended program and leads into the season with excellent prevention of larvae by rendering congregating adults unable to reproduce successfully. This is likely the best opportunity for exceptional prevention of damage.

A subsequent application of Contrado strengthens the program by delivering suppressive activity on later-developing ABW larvae while also providing season-long control of white grubs, turf caterpillars, and billbugs. This sequential approach broadens the window of control and reduces the risk of population rebound. The inclusion of other chemistries and a late-season follow up application of Suprado rounds out the program for superior control of overlapping generations.

If confident in your current “adulticide” timing approach, Suprado can also excel at controlling the post-hatch, smaller larval stages that feed internally in Program B.

ABW Growth Stage	Over-winter	Adult Peak Migration and up to 7 days after	Hatch-Small Larvae (L1-L2) Inside Stems	Medium Larvae (L2.5-L3)Emergence from Stems	Large Larvae (L4-L5) Feeding on Crowns/ Damage	As needed: 2nd Generation Adults/Overlapping growth stages
Plant Phenology	Forsythia full Bloom	Forsythia 1/2 gold: 1/2 green	Dogwood/Redbud full bloom	Catawba Rhododendron full bloom		
Program A		Suprado [15] 4 quarts/acre	Contrado [28] 12-16 fl oz/acre		Trichlorfon [1B], Spinosad [5], or Indoxacarb [22]	Suprado [15] 4 quarts/acre
Program B		Bifenthrin [3A] or Chlorpyrifos [1B]	Suprado [15] 4 quarts/acre		Trichlorfon [1B], Spinosad [5], or Indoxacarb [22]	Suprado [15] 4 quarts/acre

Features and Specs

Product Features

Formulation	Suspension Concentrate
Active Ingredient	10% Novaluron
Effective Against	Annual Bluegrass Weevil Larvae, Billbug Larvae, Turf Caterpillars, White Grubs, Chinch Bugs, Black Turfgrass Ataenius Larvae
Use Sites	Residential lawns, business and office complexes, shopping complexes, multi-family residential complexes, golf courses, airports, cemeteries, parks, playgrounds, athletic fields, and sod farms.
Packaging	2 x 1 gallon; 72 cases/pallet
Application Rates	1 gallon per acre. (See label for specific uses and rates.)
Mode of Action	Group 15. Novaluron is a Chitin Synthesis Inhibitor. Prevents the formation of a new exoskeleton.
Signal Word	Caution



At Quali-Pro, we are committed to delivering the best solutions for your turf and ornamental needs. We offer you a complete line of highly efficient, cost-effective fungicides, insecticides, herbicides and plant growth regulators designed to give you the ultimate in value.



Scan the QR Code to learn more about Suprado.

Visit www.suprado.com or call 800.242.5562 today.

5903 Genoa-Red Bluff, Pasadena, Texas 77507

[@quali_pro](https://twitter.com/quali_pro) [@qualipro](https://facebook.com/qualipro)

© 2025 Quali-Pro. Quali-Pro is a registered trademark of ADAMA. Always read and follow label directions. All registered trademarks are the property of their respective owners.