

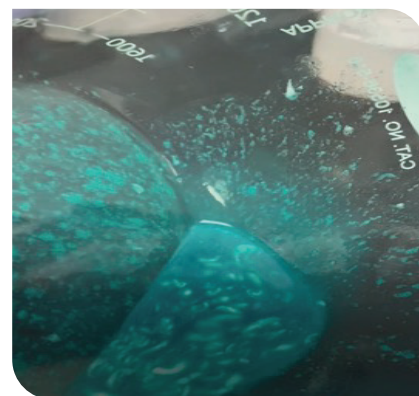
Suprado with Fosetyl-Al Best Practice

Mix with Confidence: Tank Mixing
Do's and Don'ts



Suprado continues to deliver strong performance in annual bluegrass weevil (ABW) control. While extensive testing is conducted on potential tank mix partners, not all combinations can be evaluated prior to product launch.

Recent internal research and field reports have identified a compatibility issue when Suprado is mixed with **Fosetyl-Al (and other aluminum tris-based products)**. These mixtures can form a precipitate that clogs sprayer nozzles and screens (see image).



Quali-Pro strongly recommends:

- **Do not tank mix** Suprado with Fosetyl-Al or any aluminum tris-based products.
- If tank mixing with other products, **conduct a jar test** first to ensure compatibility.

Suprado can be applied as a standalone treatment for ABW control. With proven efficacy across multiple ABW life stages, it offers flexibility and can be seamlessly integrated into a variety of spring insecticide programs, as shown in the chart below.

ABW Growth Stage	Over-winter	Adult Peak Migration and up to 7 days after	Hatch-Small Larvae (L1-L2) Inside Stems	Medium Larvae (L2.5-L3) Emergence from Stems	Large Larvae (L4-L5) Feeding on Crowns/Damage	As needed: 2nd Generation Adults/Overlapping growth stages
Plant Phenology	Forsythia full Bloom	Forsythia 1/2 gold: 1/2 green	Dogwood/Redbud full bloom	Catawba Rhododendron full bloom		
Program A		Suprado [15] 4 quarts/acre	Contrado [28] 16 fl oz/acre		Trichlorfon [1B], Spinosad [5], or Indoxacarb [22]	Suprado [15] 4 quarts/acre
Program B		Bifenthrin [3A] or Chlorpyrifos [1B]	Suprado [15] 4 quarts/acre		Trichlorfon [1B], Spinosad [5], or Indoxacarb [22]	Suprado [15] 4 quarts/acre

For questions or additional guidance, contact your Quali-Pro representative.



Scan the QR Code to learn more about Suprado.

Visit www.suprado.com or call 800.242.5562 today.

QUALI-PRO